



**ROTAREX**  
FIRETEC



 **DIMES**<sup>®</sup>  
DIGITAL MEASUREMENT SYSTEM  
BETTER FIRE SYSTEM CERTAINTY

## IMPROVES CERTAINTY OF SYSTEM READINESS

**Digitally monitors cylinder contents 24/7**



**Proactively warns in the event of a leak or problem**



## A DIMES SOLUTION FOR INERT GAS & CO<sub>2</sub> AGENTS

**INERT GAS**



**CO<sub>2</sub>**



## REDUCES OPERATING COSTS

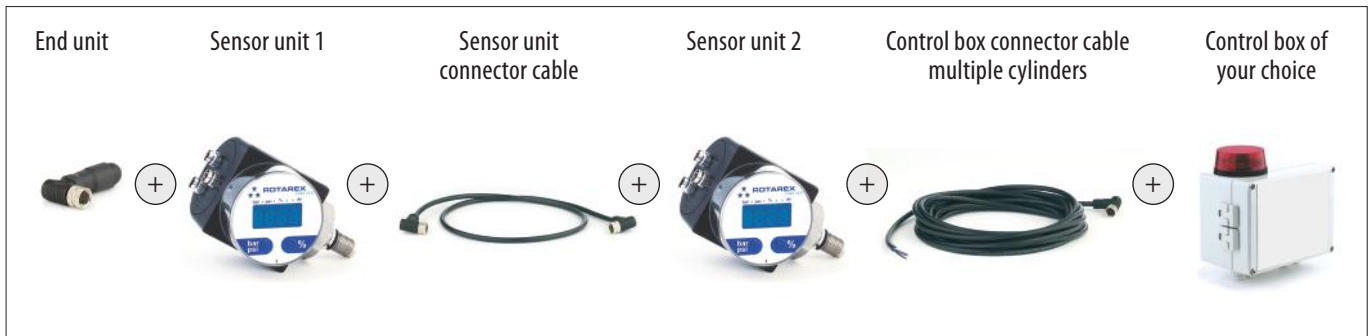
**Easier/faster maintenance:**

- ★ Interventions needed only when the system sends a warning signal
- ★ Visually verify cylinder contents at a glance with greater accuracy than pressure gauges
- ★ Eliminates need to periodically dismount / weigh cylinders to verify contents (CO<sub>2</sub> systems)

**Saves time & money over the useful lifetime. The acquisition cost pays out quickly.**

# INERT GAS

## Single & multiple cylinder configurations



## DIMES: HOW IT WORKS:

The DIMES Sensor unit replaces the standard pressure gauge on the valve port (M10x1 connection).

Built-in sensors continually monitor cylinder pressure and ambient temperature.

An integrated processor calculates the exact cylinder contents using the algorithm of the known relationship between pressure and temperature for each specific inert gas mixtures: IG100, IG01, IG55 and IG 541.

The system can be programmed to send a warning alarm when the pressure drops below a level that you determine – such as in the event of a leak or when the system discharges.

### STANDARD PRESSURE GAUGES



### DIMES SYSTEM



DIMES replaces passive pressure gauges for more accurate and pro-active monitoring as well as secondary functionalities.

# CO<sub>2</sub>

## Single Cylinder



DIMES valve + control box connection cable

## Multiple Cylinders



2 cylinder cable



3 cylinder cable



4 cylinder cable

DIMES valve + multiple cylinder connector cable + control box connection cable + end connector

## HOW IT WORKS:

The DIMES sensor units is integrated into a special valve with an linear electrode. This replaces the standard system valve.

The built-in sensors monitor ambient temperature and the capacitance differential of the gas density between two electrodes in the dip tube.

An integrated microchip calculates the exact cylinder contents based on the known densities of CO<sub>2</sub> gas at different ambient temperatures. You input the cylinder volume and 100% fill level during a simple one-time configuration when the cylinder is filled.

If the contents would ever fall below a pre-set level, such as in the event of a leak, a warning signal will sound via the control box. A warning signal is also sent when the system discharges.



# DIMES MONITORING SOLUTIONS

## MONITORING SOFTWARE AVAILABLE

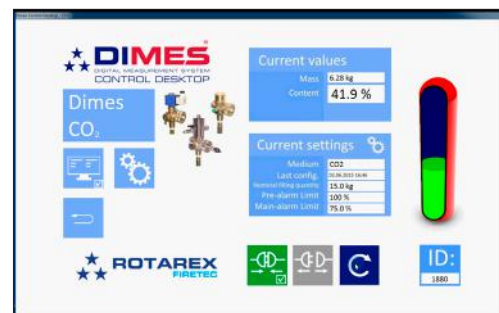
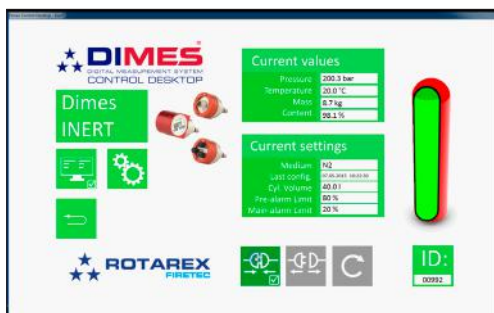
Special software is available to easily configure and monitor the contents of the DIMES system. Calibrates and track the key parameters needed for the algorithm to calculate the exact extinguishing agent level.

**Easy, Intuitive design**

**Runs on any laptop**

**Key inputs:**

- ★ Cylinder Volume
- ★ Gas type
- ★ Pre-set warning level



# A FULL LINE OF GAS CONTROL SOLUTIONS



## COMPLETE SOLUTIONS FROM SOURCE TO PROCESS.

ROTAREX is helping engineers worldwide to get better gas results: from ultra high purity production and medical care facilities to industrial and LPG applications, as well as alternative energy vehicles, fire suppression, diving, aerospace, cryogenics, laboratory, petro-chemical and welding. ROTAREX applies over 90 years of know-how and experience to custom design, develop and manufacture the high performance valves, regulators and fittings to suit your needs, all in one hand. Discover the difference ROTAREX can make in your world.

**CYLINDER VALVES**

**EQUIPMENT**

**FIRETEC**

**AUTOMOTIVE**

**LPG/SRG**

**MEDITEC**



**ULTRA HIGH PURITY VALVES**



**MEDICAL VALVES & EQUIPMENT**



**INDUSTRIAL CYLINDER VALVES**



**REFRIGERANT CYLINDER VALVES**



**PRESSURE REGULATORS**



**SUPPLY & SWITCH OVER BOARDS**



**LINE VALVES**



**FITTINGS & ADAPTORS**



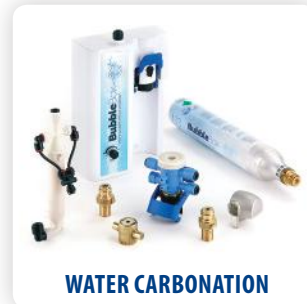
**FIXED INSTALLATION  
FIRE SYSTEMS**



**OBJECT FIRE SUPPRESSION  
SYSTEMS**



**AUTOMOTIVE VALVES  
& REGULATORS**



**WATER CARBONATION**



**LPG TANK VALVES  
& REGULATORS**



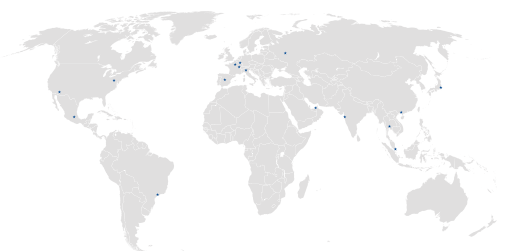
**LPG CYLINDER VALVES  
& REGULATORS**



**DIGITAL MEASUREMENT  
SYSTEMS**



**PLASTIC INJECTION MouldING**



## WORLDWIDE HEADQUARTERS

### ROTAREX S.A.

24, rue de Diekirch,  
L-7440 Lintgen  
Luxembourg  
Tel.: +352 32 78 32-1  
Fax: +352 32 78 32-854  
E-mail: firetec@rotarex.com



## REGIONAL / COUNTRY HEADQUARTERS

### NORTH AMERICA

#### USA

**Rotarex North America**  
101 Billy Road  
Building 2  
Hackettstown, NJ 07840 USA  
Tel.: +1 724-696-4340  
E-mail: northamerica@rotarex.com

#### SOUTH AMERICA

#### BRASIL

**Rotarex Brazil Ltda**  
Cond. Ind. Portal da Anhanguera Estr. Municipal  
Gov. Mário Covas, S/N  
13279-411 Bairro Macuco - Valinhos  
São Paulo Brazil  
Tel.: +55 19 3518 0800  
Fax: +55 19 3869-1503  
E-mail: brasil@rotarex.com

#### CENTRAL AMERICA

#### MEXICO

**Rotarex México**  
Fray Sebastian de Gallegos 69  
Col. El Pueblito  
C.P. 76900 Corregidora, Querétaro  
Mexico  
Tel.: +52 442 201-0898  
E-mail: mexico@rotarex.com

### EUROPE

#### EUROPEAN HEADQUARTERS

24, rue de Diekirch,  
L-7440 Lintgen, Luxembourg  
Tel.: +352 32 78 32-1  
E-mail: salesequipment@rotarex.com

#### ITALY

**Rotarex Italia S.r.l.**  
46 Via Giacomo Matteotti  
I-25080, Cliverghe di Mazzano (BS) Italy  
Tel.: +39 030 212 05 50  
Fax: +39 030 212 23 62  
E-mail: italia@rotarex.com

#### SPAIN

**Rotarex Spain**  
Edificio Foro de Somosaguas Ctra. Carabanchel a  
Pozuelo, km. 5,6 Urb. Pinar de Somosaguas, 89 bis  
Planta 1, Oficina 20  
28223 - Pozuelo de Alarcón Spain  
Tel.: +34 91 007 47 64  
E-mail: spain@rotarex.com

#### RUSSIA

**Rotarex Rus**  
Tverskaya street, 20/1 bldg, 1 of 506  
125009, Moscow Russia  
Tel.: +7 985 125 7776  
Skype: rotarexruss  
E-mail: russia@rotarex.com

#### POLAND

**Rotarex Polska**  
5 Gröbli  
PL 49-300 Brzeg, Poland  
Tel.: +48 77 416 40 16  
Fax: +48 77 416 20 99  
E-mail: polska@rotarex.com

### ASIA - PACIFIC

#### SINGAPORE

**Rotarex Fareast Pte Ltd**  
10 Ubi Crescent  
Ubi Techpark, Lobby C, #06-55  
408564 Singapore  
Tel.: +65 64 72 37 27  
Fax: +65 64 72 45 28  
E-mail: fareast@rotarex.com

#### CHINA

**Rotarex Star**  
60 Yuan Zhong Road  
Shanghai Nanhui Industrial Zone  
201300, Shanghai China  
Tel.: +86-21 5800 4000  
Fax: +86-21 5800 3226  
E-mail: china@rotarex.com

#### JAPAN

**Rotarex Japan Ltd**  
6F, Yawaragi Bldg., 1-27-11 Taito  
Taito-ku, Tokyo  
110-0016 JAPAN  
Tel.: +81 3 5817 8108  
Mob.: +81 80 3755 2539  
Fax: +81 3 5817 8168  
E-mail: japan@rotarex.com

#### INDIA

**Rotarex ENGG. PVT. LTD.**  
C-105, Mahindra Apartments  
Vikasपुरi, New Delhi 110018  
mob.: +91 998 740 1972  
E-mail: india@rotarex.com

#### THAILAND

**Rotarex (Thailand) Co Ltd.**  
200, Moo 4  
Jasmine International Tower, 6 Floor 607E  
Chaengwattana road,  
Pakkret, Pakkret, Nonhaburi 11120 Thailand  
Tel.: +66 2 100 3602  
Fax: +66 2 100 3602  
E-mail: thailand@rotarex.com

### MIDDLE EAST / AFRICA

#### MIDDLE EAST

**Rotarex Middle East**  
Jebel Ali Free Zone - Lob 17, Office 415  
P.O. Box 261952  
Dubai, U.A.E.  
Tel.: +971 (0) 4 887 6701  
Fax: +971 (0) 4 887 6702  
E-mail: middle-east@rotarex.com